



**OFFICIAL**

# Migration and Temporary visa program quarterly report on visa processing times (2024-25 Q4)

## Visa activities

In full 2024-25 program year, the Department received 9.5 million Migration and Temporary visa applications, finalising 95.7 per cent of the applications received within the program year. Current trends are indicating a slowing in new visa application being received for some visa program, however over the full 2024-25 program year there was an increase of 1.7 per cent compared to the previous year, 2023-24.

The volume of new visa applications received in the fourth quarter of 2024-25 (1 April 2025 to 30 June 2025) increased with the Department receiving nearly 2.25 million Migration and Temporary new visa applications:

- This is 4.2 per cent more than the number of applications lodged in the fourth quarter of 2023-24 (1 April 2024 to 30 June 2024) and 6.0 per cent more than the fourth quarter in 2022-23 (1 April 2023 to 30 June 2023).
- Majority of the fourth quarter growth was in the Temporary visa programs, with lodgements increasing to 2.1 million (88,000 more than the fourth quarter in 2023-24) with Working Holiday Maker applications increasing by 9.8 per cent, Temporary Skilled by 4.9 per cent, and Visitor visa applications by 5.5 per cent. However, the reduction in Student visa applications continues, with the Department receiving 19.1 per cent (28,000) less applications than in the 2023-24 fourth quarter.
- Compared to the fourth quarter of 2023-24, the 2024-25 fourth quarter Permanent Skilled visa application lodgements increased by 53.1 per cent, including increasing by 44.3 per cent in Migration Skilled and increasing by 113.0 per cent in Non-Migration Skilled visas being lodged. Provisional/Temporary Partner visa applications reduced by 6.5 per cent.

On 30 June 2025, there were nearly 768,000 Migration and Temporary visa applications on-hand.

- This is nearly 23,000 (or 3.0 per cent) more Migration and Temporary visa applications on-hand, compared to over 745,000 on-hand applications a year ago, on 30 June 2024.
- This is over 188,000 (or 32.5 per cent) more Migration and Temporary visa applications on-hand, compared to over 579,000 on-hand applications two years ago, on 30 June 2023.
- Of the 768,000 on-hand applications, over 165,000 are in programs subject to capping and/or queuing. The cap is set annually in a legislative instrument based on Migration Program planning levels.

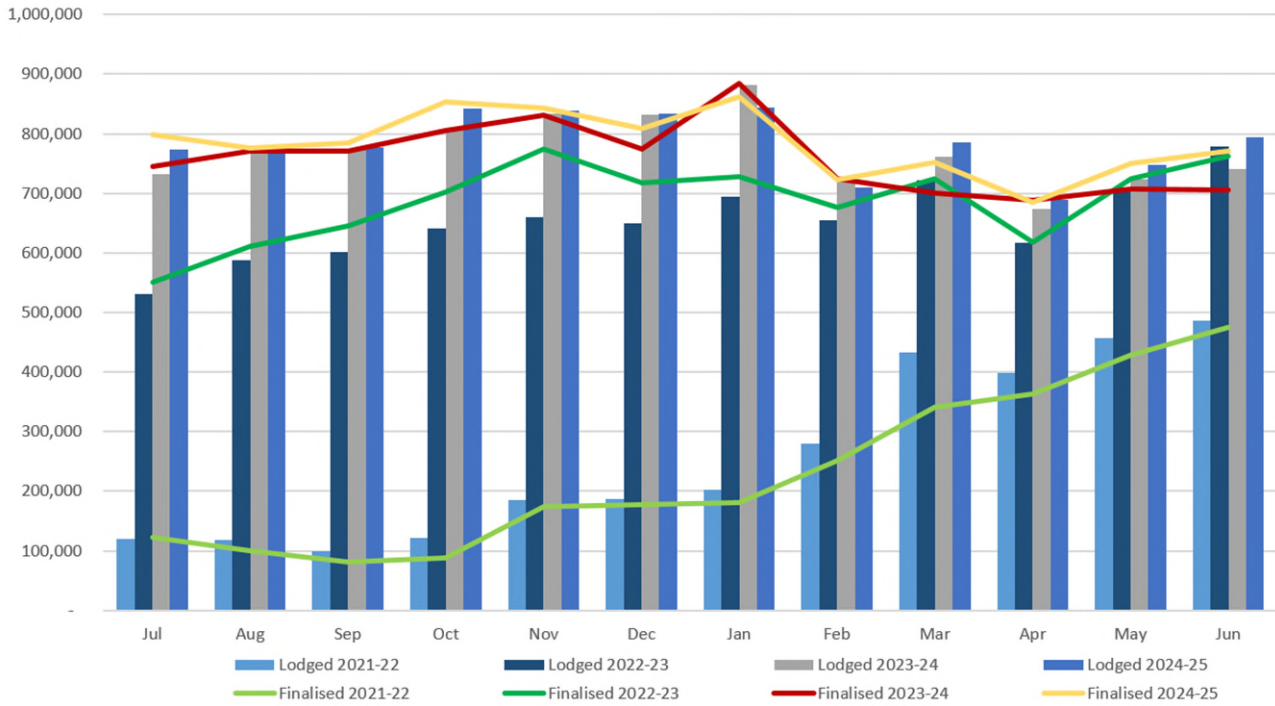
In the fourth quarter of 2024-25 the Department finalised over 2.2 million Migration and Temporary visa applications, 4.5 per cent more than in the same period in 2023-24. Of these over 2.1 million were in the Temporary visa program, an increase of 5.2 per cent, including:

- 1.25 million Visitor visa applications finalised, an increase of 3.2 per cent,
- 68,800 Working Holiday Maker applications finalised, an increase of 43.0 per cent, and
- 39,500 Temporary Skilled applications finalised, an increase of 26.1 per cent.

In the full 2024-25 program year, the Department finalised 9.4 million Migration and Temporary visa applications.

Migration and Temporary visa applications lodged and finalised by month from 2021-22 to 2024-25 up to June 2025 are available in **Figure 1**.

**Figure 1:** *Migration and Temporary visa applications lodged and finalised 2021-22, 2022-23, 2023-24 and 2024-25 by month*



## Processing times

Visa processing times for applications decided in the fourth quarter of 2024-25 varied across the programs, when compared to the previous year. Global median processing times for key programs decided in the 2024-25 fourth quarter, compared to the 2023-24 fourth quarter:

- Visitor visas remained steady being decided in less than one day
- Skilled (Temporary) decided in 4 months (increased from 33 days)
- Student visas decided in 29 days (reduced from 45 days)
- Provisional/Temporary Partner visas decided in 14 months (reduced from 17 months)
- Working Holiday Makers remained steady being decided in less than one day

There will continue to be variability in processing times from month to month because global processing times reflect the age of applications decided in a specific period. As such, when the Department focuses efforts on processing older applications, processing times will temporarily increase and as a result may not reflect processing times for new applications.

## Visa application flow rates

Visa application flow rates measure the proportion of applications lodged in a period that have been finalised in either the same period or by a subsequent snapshot date. The flow rates focus on primary applications received only. Any period can be used as the lodgement period, but this report focuses on the latest quarter and the latest 12 months.

**Table 1** provides the visa flow rates for key Temporary visa applications lodged and finalised in the fourth quarter of 2024-25, with the Department finalising over 90 per cent of Temporary visas lodged in the fourth quarter.

**Table 2** provides the flow rates for the same key Temporary visa applications lodged and finalised in the 12 months prior to the end of quarter four (1 July 2024 to 30 June 2025), with the Department finalising over 97 per cent of applications lodged in the 12 months.

**Table 1:** *Three months (quarter) snapshot of primary Temporary visa applications lodged between 1 April 2025 and 30 June 2025 by key visa categories*

Visa Category	2024-25 Quarter 4 (April to June 2025)		
	Lodged in 4 <sup>th</sup> quarter 2024-25	Lodged in 4 <sup>th</sup> quarter 2024-25 and finalised	% lodged in 4 <sup>th</sup> quarter 2024-25 and finalised
Maritime Crew	75,954	75,657	99.61%
Skilled (Temporary)	22,561	5,062	22.44%
Student	104,445	60,864	58.27%
Temporary Resident (Other Employment)	45,527	31,322	68.80%
Transit	30,755	28,954	94.14%
Visitor	1,249,954	1,184,237	94.74%
Working Holiday Maker	65,434	56,635	86.55%
<b>Grand Total</b>	<b>1,594,630</b>	<b>1,442,731</b>	<b>90.47%</b>

**Table 2:** *12 month snapshot of primary Temporary visa applications lodged between 1 July 2024 and 30 June 2025 by key visa categories*

Visa Category	Rolling 12 months (July 2024 to June 2025)		
	Lodged in last 12 months	Lodged in last 12 months and finalised	% lodged last 12 months and finalised
Maritime Crew	318,720	318,402	99.90%
Skilled (Temporary)	86,351	58,417	67.65%
Student	371,468	298,921	80.47%
Temporary Resident (Other Employment)	220,381	196,744	89.27%
Transit	144,679	142,856	98.74%
Visitor	5,449,717	5,380,803	98.74%
Working Holiday Maker	316,545	305,696	96.57%
<b>Grand Total</b>	<b>6,907,861</b>	<b>6,701,839</b>	<b>97.02%</b>