



**OFFICIAL**

# Migration and Temporary visa program quarterly report on visa processing times (2024-25 Q3)

## Visa activities

The Department continues to work through the increased demand for Migration and Temporary visa applications, focussing on finalising older applications and maintaining a high level of integrity in the visa programs.

Nearly 2.4 million Migration and Temporary new visa applications were received in the third quarter of 2024-25 (1 January 2025 to 31 March 2025):

- This is 1.4 per cent less than the number of applications lodged in the third quarter of 2023-24 but a 12.9 per cent increase on the third quarter in 2022-23. However, the 2024-25 year to date (July 2024 to March 2025) lodgements have increased by 0.8 per cent when compared to the same period in 2023-24, and 25.1 per cent when compared to the same period in 2022-23.
- Some Temporary visa program lodgements continue to increase such as Working Holiday Maker applications lodged have increased by 16.7 per cent when comparing the second quarter 2024-25 to the second quarter in 2023-24, as well as the Temporary Skilled increasing by 18.3 per cent. Whereas Visitor visa applications lodged have decrease by 0.4 per cent (over 6,000) and Students reduced by 30.8 per cent (over 46,000).
- Compared to the third quarter of 2023-24 Permanent Skilled visa application lodgements have decreased by 1.5 per cent, including Migration Skilled visa lodgements reducing by 4.5 per cent which offset a 19.4 per cent increase in Non-Migration Skilled visas lodged. Provisional/Temporary Partner visa applications lodged reduced by 2.3 per cent in this third quarter.

On 31 March 2025, there were nearly 741,000 Migration and Temporary visa applications on-hand.

- This is nearly 36,000 (or 5 per cent) more Migration and Temporary visa applications on-hand, compared to over 705,000 on-hand applications a year ago, on 31 March 2024.
- Of the 741,000 on-hand applications, over 162,000 are in programs subject to capping and/or queuing. The cap is set annually in a legislative instrument based on Migration Program planning levels.

In the third quarter of 2024-25 the Department finalised over 2.3 million Migration and Temporary visa applications, 0.8 per cent more than in the same period in 2023-24. Of these over 2.2 million were in the Temporary visa program, an increase of 1.7 per cent, including:

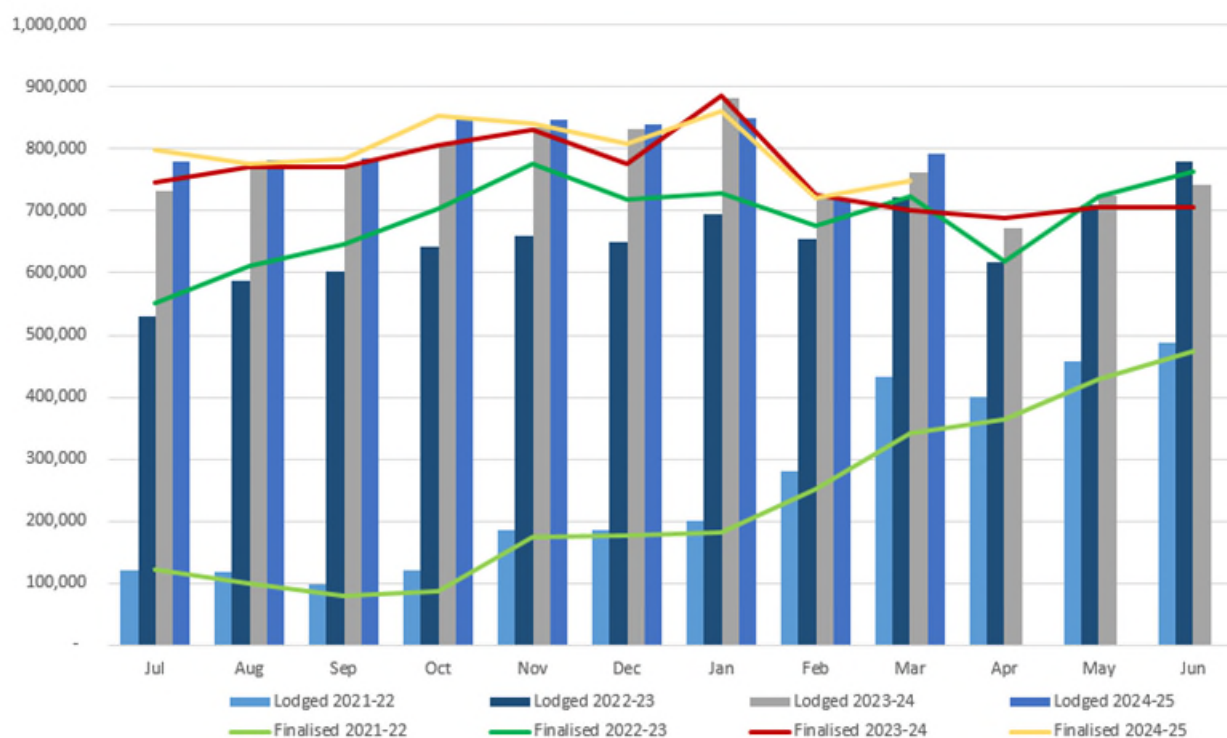
- 1.34 million Visitor visa applications finalised, an increase of 0.1 per cent,
- 79,400 Working Holiday Maker applications finalised, an increase of 21.6 per cent, and
- 36,500 Temporary Skilled applications finalised, an increase of 42.1 per cent.

The total 2024-25 year to date (July 2024 to March 2025) finalisations have also increased by 2.2 per cent when compared to the same period in 2023-24, and 17.2 per cent when compared to the same period in 2022-23.

Migration and Temporary visa applications lodged and finalised by month from 2021-22 to 2024-25 up to March 2025 are available in **Figure 1**.

**OFFICIAL**

**Figure 1:** *Migration and Temporary visa applications lodged and finalised 2021-22, 2022-23, 2023-24 and 2024-25 by month*



## Processing times

Visa processing times for applications decided in the third quarter of 2024-25 has increased for some programs, when compared to the previous year. Global median processing times for key programs in the third quarter 2024-25, compared to the third quarter 2023-24:

- Visitor visas remained steady being decided in less than one day
- Skilled (Temporary) decided in 68 days (increased from 33 days)
- Student visas decided in 34 days (increased from 28 days)
- Provisional/Temporary Partner visas decided in 13 months (increased from 10 months)
- Working Holiday Makers remained steady being decided in less than one day

There will continue to be variability in processing times from month to month because global processing times reflect the age of applications decided in a specific period. As such, when the Department focuses efforts on processing older applications, processing times will temporarily increase and as a result may not reflect processing times for new applications.

## Visa application flow rates

Visa application flow rates measure the proportion of applications lodged in a period that have been finalised in either the same period or by a subsequent snapshot date. The flow rates focus on primary applications received only. Any period can be used as the lodgement period but this report focuses on the latest quarter and the latest 12 months.

**Table 1** provides the visa flow rates for key Temporary visa applications lodged and finalised in the third quarter of 2024-25, with the Department finalising nearly 90 per cent of Temporary visas lodged in the third quarter.

**Table 2** provides the flow rates for the same key Temporary visa applications lodged and finalised in the 12 months prior to the end of quarter three (1 April 2024 to 31 March 2025), with the Department finalising over 96 per cent of applications lodged in the 12 months.

**Table 1:** *Three months (quarter) snapshot of primary Temporary visa applications lodged between 1 January 2025 and 31 March 2025 by key visa categories*

Visa Category	2024-25 Quarter 3 (January to March 2025)		
	Lodged in 3 <sup>rd</sup> quarter 2024-25	Lodged in 3 <sup>rd</sup> quarter 2024-25 and finalised	% lodged in 3 <sup>rd</sup> quarter 2024-25 and finalised
Maritime Crew	80,901	80,391	99.37%
Skilled (Temporary)	17,812	5,669	31.83%
Student	89,372	45,243	50.62%
Temporary Resident (Other Employment)	74,155	50,131	67.60%
Transit	42,358	36,396	85.92%
Visitor	1,350,866	1,266,650	93.77%
Working Holiday Maker	76,409	63,956	83.70%
<b>Grand Total</b>	<b>1,731,873</b>	<b>1,548,436</b>	<b>89.41%</b>

**Table 2:** *12 month snapshot of primary Temporary visa applications lodged between 1 April 2024 and 31 March 2025 by key visa categories*

Visa Category	Rolling 12 months (April 2024 to March 2025)		
	Lodged in last 12 months	Lodged in last 12 months and finalised	% lodged last 12 months and finalised
Maritime Crew	315,126	314,591	99.83%
Skilled (Temporary)	86,258	58,174	67.44%
Student	392,726	318,198	81.02%
Temporary Resident (Other Employment)	224,905	192,377	85.54%
Transit	139,874	133,875	95.71%
Visitor	5,373,405	5,285,578	98.37%
Working Holiday Maker	310,726	295,246	95.02%
<b>Grand Total</b>	<b>6,843,020</b>	<b>6,598,039</b>	<b>96.42%</b>